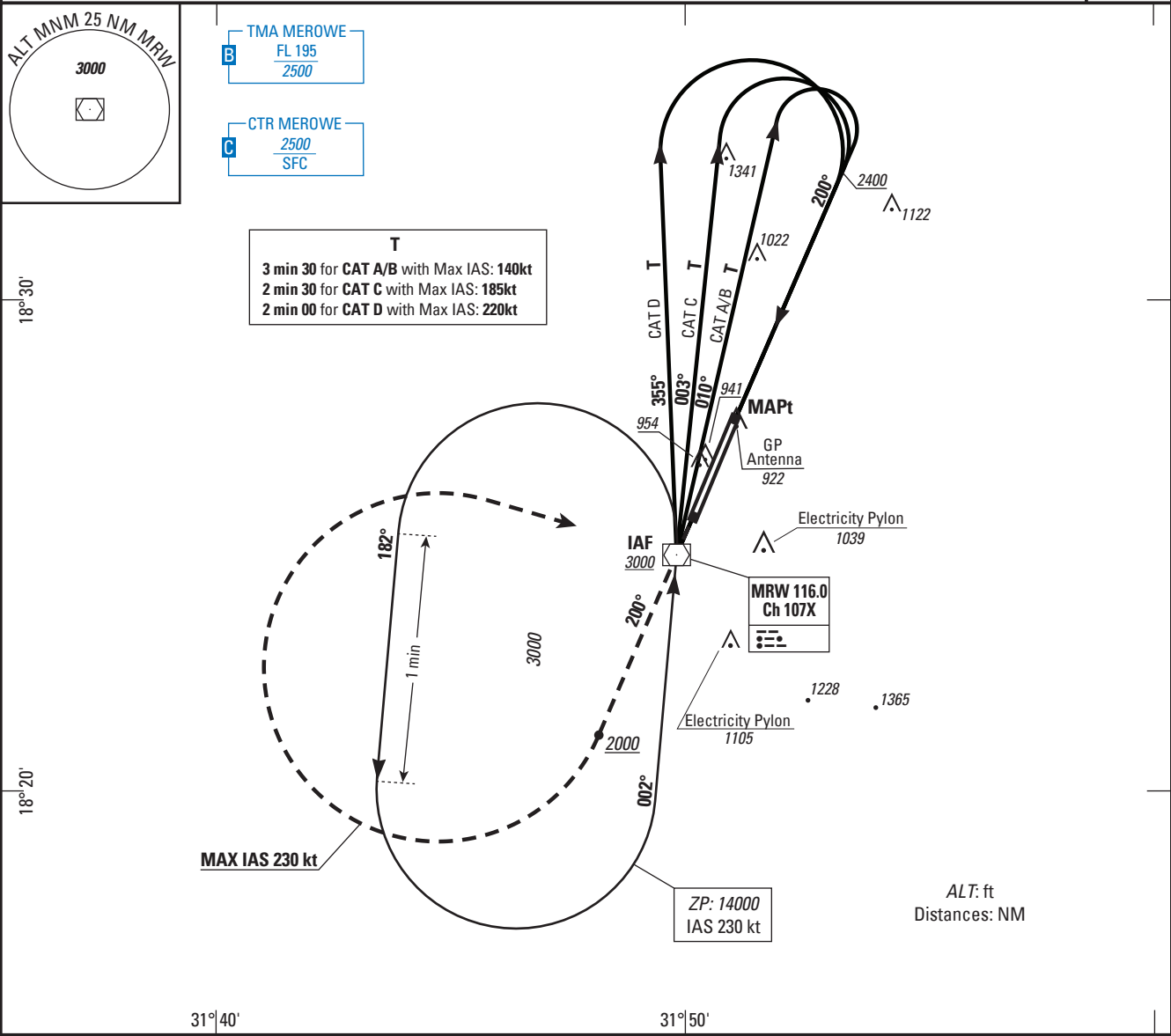


INSTRUMENT APPROACH CHART  
CAT. A B C D  
AD ELEV: 899, THR ELEV: 876 (31 hPa)

MEROWE **HSMN**  
VOR y RWY 20

APP: 118.4 TWR: 118.4	VAR 3.0° E (15)
--------------------------	-----------------------



**TA: 7000**

**Missed Approach:**  
Climb on **R200° MRW** (MT 200°). At **2000**, turn **right** direct to **MRW**, up to **3000**. At **MRW**, join the holding pattern or follow ATC instructions.  
If unable to reach **3000** over **MRW**, continue to climb in the holding up to **3000**.  
**MAX IAS 230 kt.**  
Do not turn before MAPt.

THR (NM) ← 3.0 0

MNM AD : Vertical distances in feet, RVR and VIS in meters.

C A T	VOR	Circling	
	OCA	OCA	VIS
A	<b>1550</b>	<b>1550</b>	1900
B		<b>1550</b>	2800
C		<b>1630</b>	3700
D		<b>1760</b>	4600

NOTE: